



RATES: \$US2,995 - \$US2,360 / person

4DAYS, 3 NIGHTS INGAGI TREK + BISOKE HIKE TOUR

Full Program:

Day 1: Arrive at Kigali Airport – Transfer to the Volcanoes National Park.

Meet at your Hotel in Kigali or at Kigali International Airport (Flight TBA), after disembarking from the plane, go under the migration and customs formalities, you will then do your PCR test (\$50 pp to be paid directly to the medical officer) greetings and immediate transfer to INGAGI Park View Lodge,

INGAGI Park View Lodge offers spectacular and uninterrupted views of the Virunga Mountains, home to the endangered Mountain Gorillas. Situated on the foot of the Virunga Volcanoes, we're just a short distance 10 Minutes' drive from the meeting point for gorilla tracking.

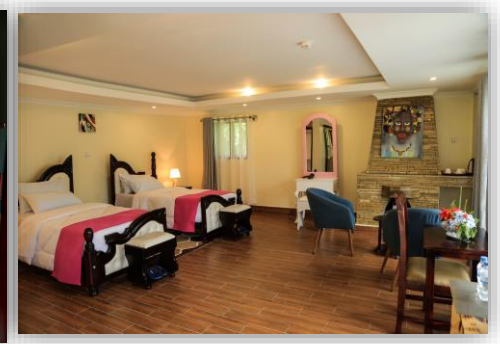
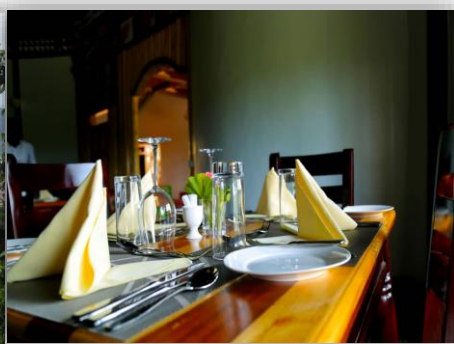
Ingagi Lodge is eco-friendly and has been constructed using sustainable local materials where possible. Each Cottage has a private veranda and enormous windows, some giving spectacular views of the mountains and the flowering nature.

The drive is through beautiful rolling hills, awesome landscape, bypassing coffee and banana plantations on a comfortable paved road and is approximately 3 hours from Kigali to your lodge.

Upon arrival to your lodge you will check in, for dinner and overnight.

Overnight: Ingagi Park View Lodge – www.ingagiparkviewlodge.com

Meal Plan: Dinner



Day 2: Gorilla trekking Day in the Volcanoes National Park

Wake up for an early morning breakfast and at around 6:40AM, we head to the Kinigi park Head quarter.



Today, your gorilla trek is sure to be the highlight of your tour. We will be at the Kinigi ranger station by 7am, where we are allocated guides and briefed before heading into the forest. We will track one of the 10 habituated Gorilla groups in Rwanda. You will then Move in a company of experienced ranger guides through the forest while searching for mountain gorillas. Only eight people are able to track each habituated group. Time taken while searching for these great apes, rangers between 2 to 6 hours depending on the movement of the gorilla

groups as their territory can range up to 40km. The park rangers and guides will clear the way and assist you through the forest. Once the gorilla group is located you will spend an hour with them as they feed, rest and play. Habituation of a gorilla group takes a minimum of two years, with daily visits to allow the gorilla group to tolerate human presence.

Sitting with the mountain gorilla is one of the most amazing wildlife experiences you will ever have. A dominant male silverback can weigh over 200 kilos and is the largest living primate. He will control our meeting as well as deciding when his group will eat, sleep and move on. His females care for their young with affection and playfulness but also with discipline. They are very curious, and are capable of making over 25 different vocalizations, including chuckling and purring. Communication also includes posturing, chest beating and if all else fails - the charge! The privilege of spending an hour with this family group is an experience that will never leave you. After your hour is up, you wind your way slowly out of the forest and back to the camp to swap stories about your amazing experience.

For the gorilla trek please bring walking boots, or waterproof trainers and socks. You need to wear long pants whilst walking in the bush due to stinging nettles. Layers are best, as conditions in the tropical rain forest can change from hot to wet and cold in an instant. Start with a long sleeved t-shirt and long pants thick socks and boots, add a fleece and rainproof jacket and you should be right for all conditions. Volcanoes National Park where the gorillas reside is a high altitude rainforest so come prepared for all conditions.

After the Gorilla trekking, you will return to your Lodge, for a complementary foot massage, refresh a bit, have a late hot lunch (since you will have packed snacks) and the remainder of your day is at leisure or you may wish to visit the Ellen DeGeneres Campus of Dian Fossey; the walkable distance (5 Minutes) and very close neighbor to Ingagi Park View Lodge.

Overnight: Ingagi Park View Lodge

Meal Plan: Full Board

Day 3: Optional Mount Bisoke Hike (3,711 M), Dian Fossey Grave

Today after an early morning breakfast at 7:00 am you will decide to go for one of the other Optional activities carried out in the Volcanoes National park and out of the gorilla trekking experience such as the Mount Bisoke Hike, the Dian Fossey hike Tour and you may also wish to visit the Twin Lakes Burera and Ruhondo.

For both Dian Fossey or Bisoke Hike the trek involves a 30-minute drive from the park headquarters to the trailhead in a rough road but worthy free Rwandan massage and then a 25 - minute stroll to the park boundary and you will be at an altitude of 2,400 M from where you will start the hike. Then ready to make the **3000 Meters to the Dian Fossey Hike Site** and this is where the primatologist Dian Fossey lived in her hut on her time of her conservation research during the 1980's.

And up to 3,711M to **Mount Bisoke**.

Hiking the Bisoke is organized as a one Day hike and starts early in the morning. However, it might take you around 3-4 hours getting up to the summit depending on how physically fit you are. A park ranger will escort you to the top of the volcano. On a clear Day you will enjoy the beautiful crater lake and the views of the other Virunga volcanoes. Fantastic views in all directions, lushly forested slopes, shady lobelia forest and an exhilarating climb! Sometime even lucky to meet some primates on the way such as the golden Monkeys, the gorillas as it is a home range for more than one Gorilla family (Amahoro and umubano group).

The Bisoke with an altitude of 3.711 m is the fourth highest mountain of the virunga chain and has a beautiful lake on the top. The crater lake is the greatest of the virunga chain. It straddles the border of Rwanda and the Democratic Republic of the Congo, but the summit is located in Rwanda. The mountain is located within Rwandan Volcanoes National Park and Congolese Virunga National Park. The steep slopes of the peak are densely covered with equatorial rainforest and alpine meadows. Bisoke is one of the mountains considered habitat for the Endangered mountain gorilla, and the Karisoke Research Center founded by Dian Fossey is located in the valley to the west.

After the hike retrace back to the starting point, drive back to your Hotel and the reminder of your evening will be at leisure.

Overnight: Ingagi Park View Lodge.

Meals Plan: Full Board

Day 4: Departure to KIGALI

Have a leisure morning breakfast, then we transfer from Ingagi Park View Lodge proceed with your journey to Kigali, and if time allows make a stop at the Genocide Museum; therefore, after, proceed to your Hotel in Kigali or at the airport for your out bound flight.

End of the Tour – Welcome back.

TOUR INCLUSIVE & EXCLUSIVE

The cost Corresponded will be:

Tour includes: -

- Accommodation as per the itinerary.
- Meals (Dinner on Day 1, Day 2: Full Board 3: Breakfast)
- Transportation in a comfortable 4x4 Safari Van/jeep English speaking driver guide
- All the meals as stated in the above
- 1 gorilla permit in the Volcanoes Park equivalent to \$ 1,500
- 1 Golden Monkeys Permit
- Optional Mount Bisoke Hike, Dian Fossey Grave or Twin Lakes
- Bottle of Drinking water during your days of travel
- Transfers as per the itinerary

Tour excludes: -

- International Airfare
- Covid Test
- Gratuities
- Visa fees to Rwanda
- Personal items like Laundry
- Insurance

N.B: It is a requirement to do a PCR Covid test for everyone who visit the primate in Rwanda.