



RATES: \$US2,520 - \$US2,060 / person

3 DAYS, 2 NIGHTS INGAGI TREKKING TOUR

Full Program:

Day 1: Arrive at Kigali Airport – Transfer to the Volcanoes National Park.

Meet at your Hotel in Kigali or at Kigali International Airport (Flight TBA), after disembarking from the plane, go under the migration and customs formalities, you will then do your PCR test (\$50 pp to be paid directly to the medical officer) greetings and immediate transfer to INGAGI Park View Lodge,

INGAGI Park View Lodge offers spectacular and uninterrupted views of the Virunga Mountains, home to the endangered Mountain Gorillas. Situated on the foot of the Virunga Volcanoes, we're just a short distance 10 Minutes' drive from the meeting point for gorilla tracking.

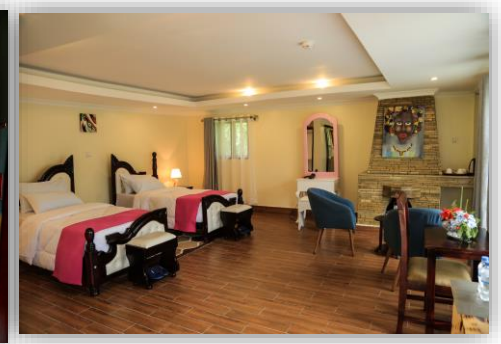
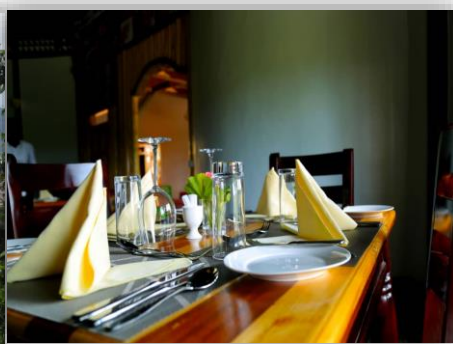
Ingagi Lodge is eco-friendly and has been constructed using sustainable local materials where possible. Each Cottage has a private veranda and enormous windows, some giving spectacular views of the mountains and the flowering nature.

The drive is through beautiful rolling hills, awesome landscape, bypassing coffee and banana plantations on a comfortable paved road and is approximately 3 hours from Kigali to your lodge.

Upon arrival to your lodge you will check in, for dinner and overnight.

Overnight: Ingagi Park View Lodge – www.ingagiparkviewlodge.com

Meal Plan: Lunch & Dinner



Day 2: Gorilla trekking Day in the Volcanoes National Park

Wake up for an early morning breakfast and at around 6:40AM, we head to the Kinigi park Head quarter.



Today, your gorilla trek is sure to be the highlight of your tour. We will be at the Kinigi ranger station by 7am, where we are allocated guides and briefed before heading into the forest. We will track one of the 10 habituated Gorilla groups in Rwanda. You will then Move in a company of experienced ranger guides through the forest while searching for mountain gorillas. Only eight people are able to track each habituated group. Time taken while searching for these great apes, rangers between 2 to 6 hours depending on the movement of the gorilla groups as their territory can range up to 40km. The park rangers and guides will clear the way and assist you through the forest. Once the gorilla group is located you will spend an hour with them as they feed, rest and play. Habituation of a gorilla group takes a minimum of two years, with daily visits to allow the gorilla group to tolerate human presence.

Sitting with the mountain gorilla is one of the most amazing wildlife experiences you will ever have. A dominant male silverback can weigh over 200 kilos and is the largest living primate. He will control our meeting as well as deciding when his group will eat, sleep and move on. His females care for their young with affection and playfulness but also with discipline. They are very curious, and are capable of making over 25 different vocalizations, including chuckling and purring. Communication also includes posturing, chest beating and if all else fails - the charge! The privilege of spending an hour with this family group is an experience that will never leave you. After your hour is up, you wind your way slowly out of the forest and back to the camp to swap stories about your amazing experience.

For the gorilla trek please bring walking boots, or waterproof trainers and socks. You need to wear long pants whilst walking in the bush due to stinging nettles. Layers are best, as conditions in the tropical rain forest can change from hot to wet and cold in an instant. Start with a long sleeved t-shirt and long pants thick socks and boots, add a fleece and rainproof jacket and you should be right for all conditions. Volcanoes National Park where the gorillas reside is a high altitude rainforest so come prepared for all conditions.

After the Gorilla trekking, you will return to your Lodge, for a complementary foot massage, refresh a bit , have a late hot lunch (since you will have packed snacks) and the remainder of your day is at leisure or you may wish to visit the Ellen DeGeneres Campus of Dian Fossey the walkable (5 Minutes) and very close neighbor to Ingagi Park View Lodge.

Day 3: To KIGALI - Depart

Have a leisure morning breakfast, then we transfer from Ingagi Park View Lodge proceed with your journey to Kigali, and if time allows make a stop at the Genocide Museum Therefore, after proceed to your Hotel in Kigali or at the airport for your out bound flight.

End of the Tour – Welcome back

TOUR INCLUSIVE & EXCLUSIVE

The cost Corresponded will be:

Tour includes: -

- Accommodation as per the itinerary.
- Meals (Dinner on Day 1, Day 2: Full Board 3: Breakfast)
- Transportation in a comfortable 4x4 Safari Van/jeep English speaking driver guide
- All the meals as stated in the above
- 1 gorilla permit in the Volcanoes Park equivalent to \$ 1,500
- Bottle of Drinking water during your days of travel
- Transfers as per the itinerary

Tour excludes: -

- International Airfare
- Covid Test
- Gratuities
- Visa fees to Rwanda
- Personal items like Laundry
- Insurance
- All drinks & activities not mentioned above
- Any other item not mentioned in the itinerary

N.B: The meeting Point can be at Kigali Airport or at your Hotel in Kigali based on the guests request.